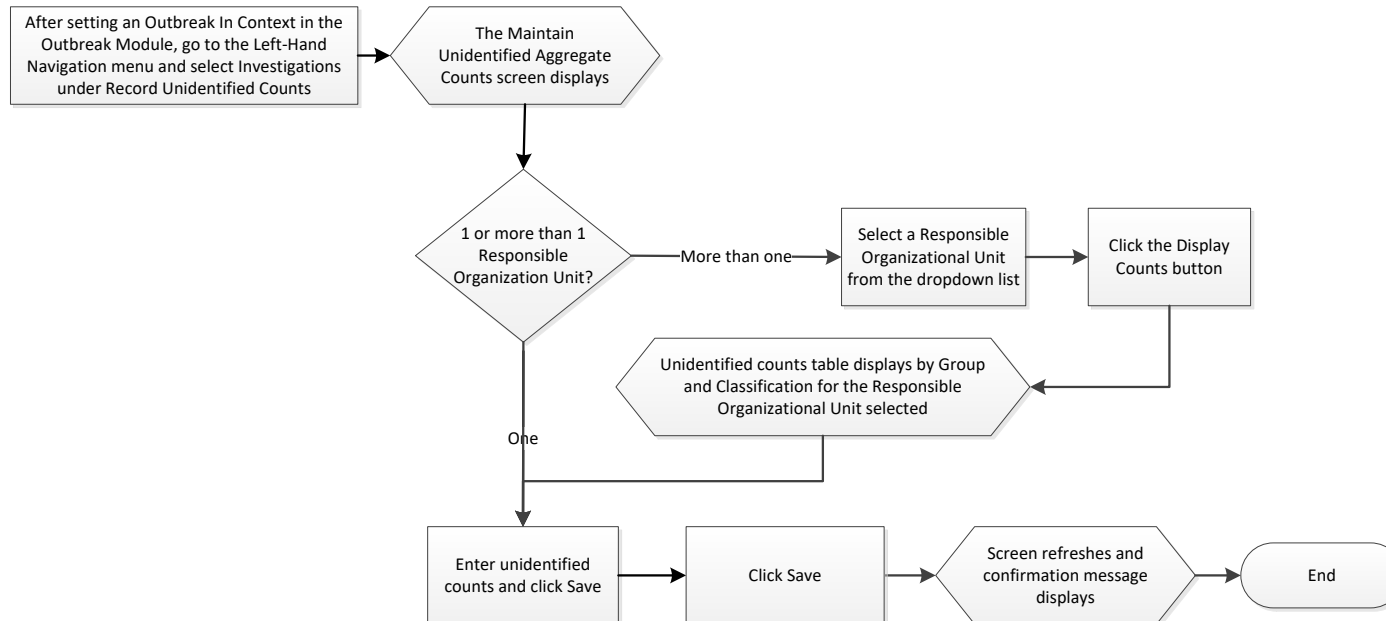


## Record Unidentified Investigations – QRC OTB 101-7.1



### Points to Remember

- The Classifications (e.g. Case-Confirmed; Case-Suspect) displayed will be those defined for the Disease in the Investigations module.
- A warning will display if the total number of cases and contacts exceed the Population Denominator, if a population denominator has been entered for the group.
- The Population Denominator is shared between the **Outbreak Groups** screen and the **Record Unidentified Counts** screens. The population denominator can be updated on the **Outbreak Groups** or the **Record Unidentified Counts** screens. Updates made to the population denominator on any of these screens will appear on the **Outbreak Groups** screen and the **Record Unidentified Counts** screens.