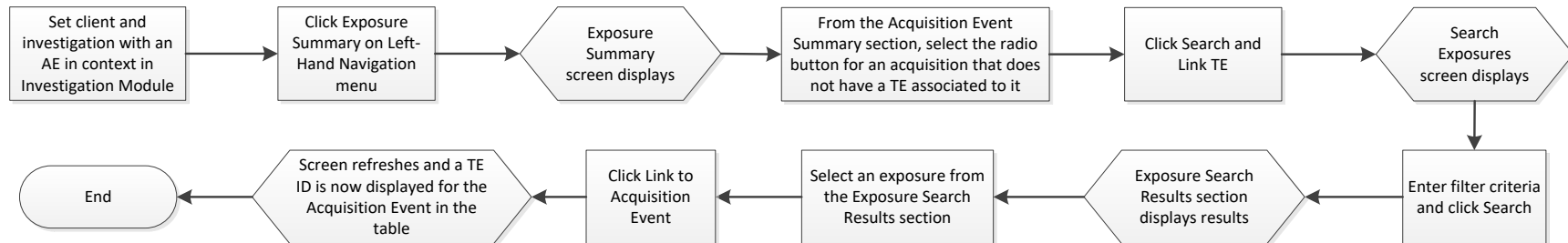


## Link Transmission to an Acquisition Event – QRC IOM 104-12



### Points to Remember

- A TE can have multiple linked Contact or Case Investigations (note: consideration should be given to creating an Outbreak when multiple Clients are linked to a TE). A TE can be linked to zero, one or more AEs, which allows a Source Investigation to be linked to zero or more Contact Investigations.
- Once a Contact is linked to the TE, an AE is automatically created for the Contact Investigation.
- An AE may not be directly linked to another AE, but they could be indirectly linked via a common TE, which allows Contact Investigations to be linked indirectly with other Contact Investigations.