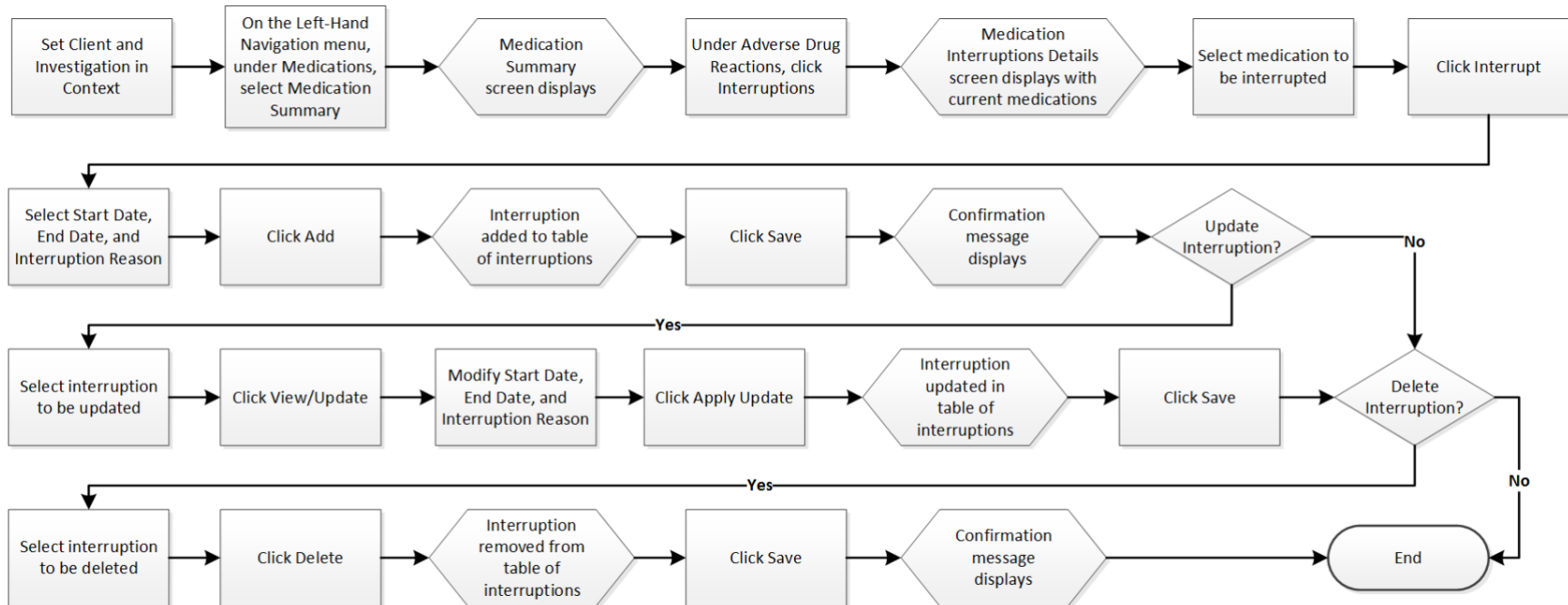


TB or HIV Medications Interruptions – QRC IOM 103-6.8



Points to Remember

- The Medication Interruption Details screen lets a user enter an interruption for a client’s medications. This information can be used to calculate compliance and determine appropriate future prophylaxis.
- The duration and interrupted doses are automatically calculated and displayed in the interruptions table.
- If a drug interruption falls within or overlaps the dates of an adherence period, an icon will be displayed for the drug on the adherence screen.