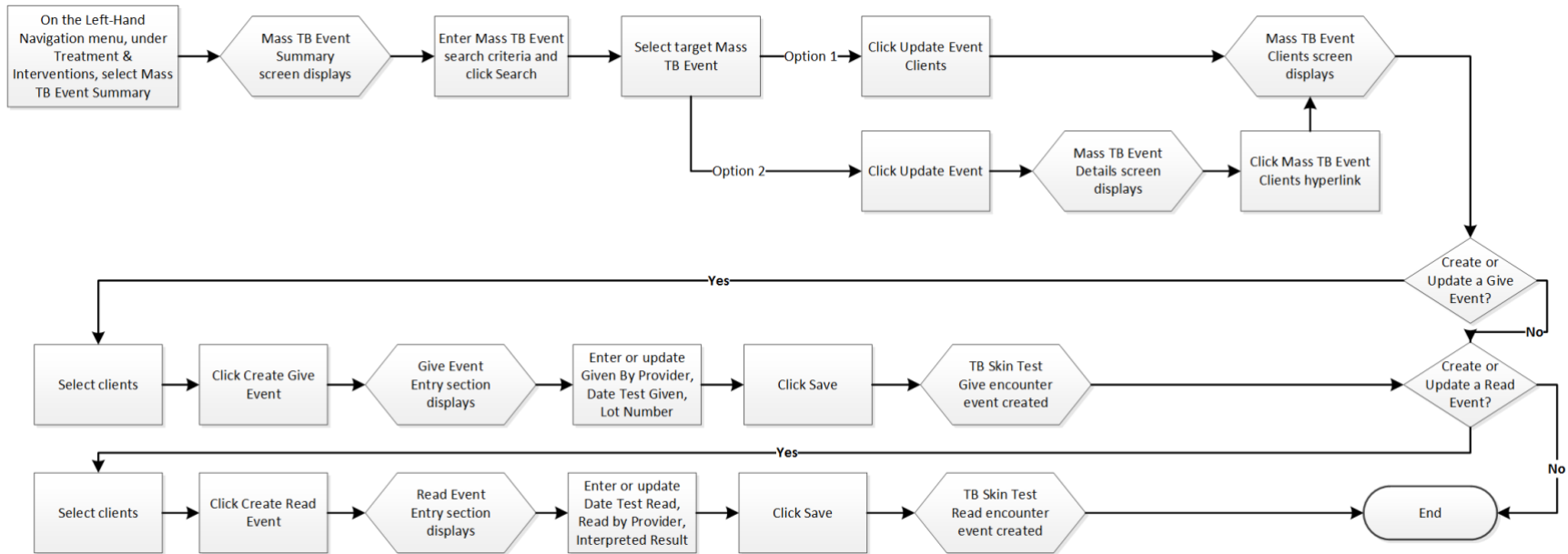


## Mass TB Events View Clients, Give or Read Event Create, Update – QRC IOM 103-5.7



### Points to Remember

- A user can access the **Mass TB Event Clients** screen from both the **Mass TB Event Summary** screen and the **Mass TB Event Details** screen; both options are described in this QRC.
- TB Give and Read events created using the Mass TB Event screens will not be associated with a TB investigation until they are moved manually via the Subject Summary screen. See Section 7 for instructions.
- When creating or updating a Give Event, users can click the **Select All** or **Deselect All** buttons to either select or deselect all clients in the list.