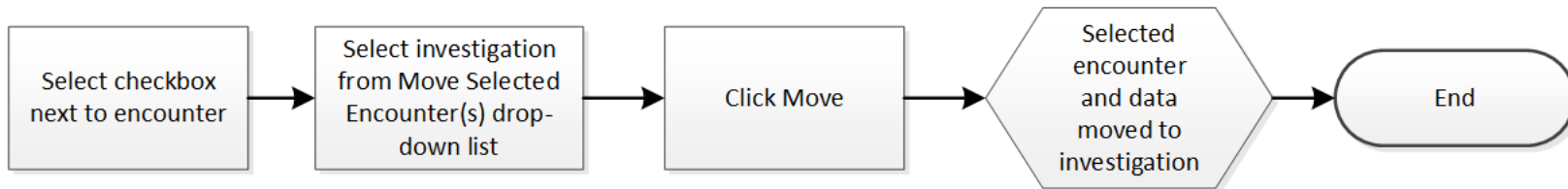


## Move TB Skin Test to Investigation – QRC IOM 103-5.10



### Points to Remember

- If a TB Skin Test Give/Read event, Follow Up, or IGRA lab was not created with an investigation in context, it can be moved to the investigation from the **Subject Summary** screen.
- All TB Skin Test Gives/Reads created from the Mass TB Event section will not be associated with an Investigation until they are moved. The event must have initially been created with the same TB encounter group as the investigation to which it will be moved.
- Once an encounter is moved to an investigation, it cannot be removed from an investigation, but may be moved to another open investigation.
- TB Skin Tests generate TB Skin Test Give and TB Skin Test Read encounters. Follow Up Lab reports generate lab encounters.