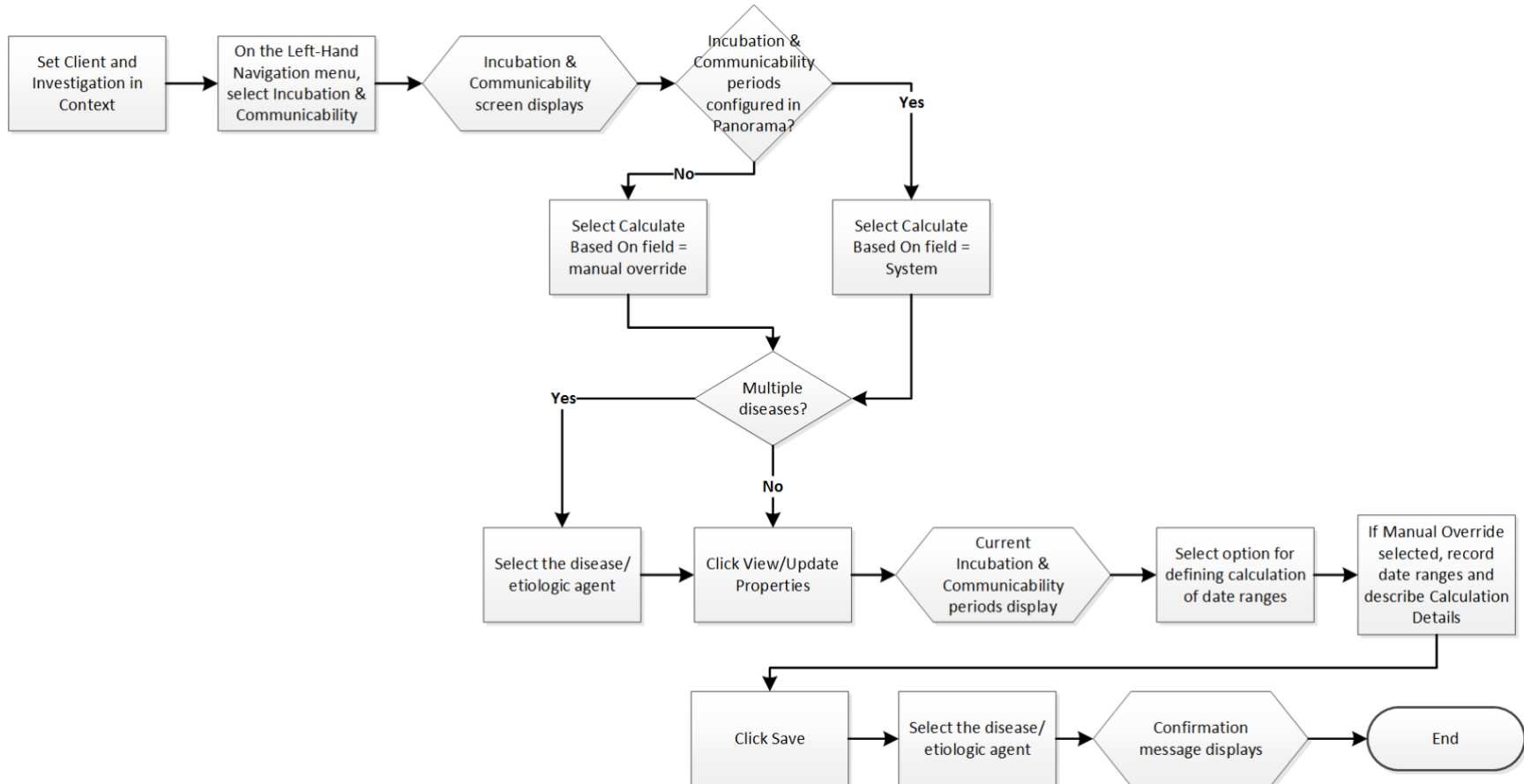


## Incubation and Communicability – QRC IOM 103-1



### Points to Remember

- The Incubation & Communicability screen lets a user view and record communicability and incubation periods, and related information for a subject's Disease Event.



## Panorama Quick Reference Card



- The **Incubation period** is the time interval between initial contact with the infectious agent and the onset of symptoms associated with the infection.
- The **Communicability period** is the time interval when the subject is capable of transmitting an etiologic agent to another subject.
- Refer to the **Incubation & Communicability Tips and Tricks** document for a list of diseases for which the Incubation & Communicability periods have been configured in Panorama.
- A client and investigation must be in context to use this screen.
- An Etiologic agent must be selected for the disease event to view this screen.
- The system enforces appropriate order in the dates for manually overridden incubation and communicability ranges.