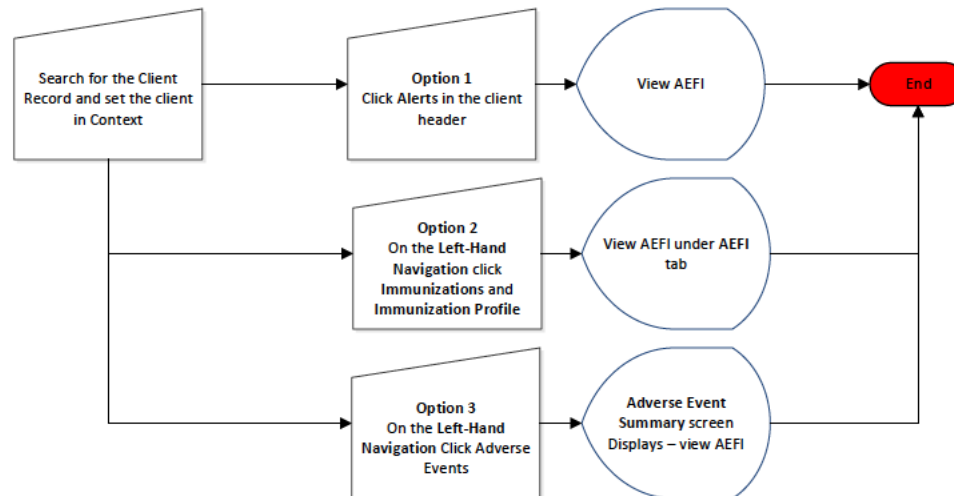


Adverse Event Following Immunization (AEFIs) View AEFIs - QRC 2.8A



Points to Remember

- Adverse Events Following Immunizations (AEFIs) include any adverse event or medical incident that occurs after an immunization has been administered, is believed to be caused by the immunization and is a cause for concern.
- There are three ways to view an AEFI in Panorama.
- For more information about AEFIs, see QRC 2.8B Record & Update AEFIs.