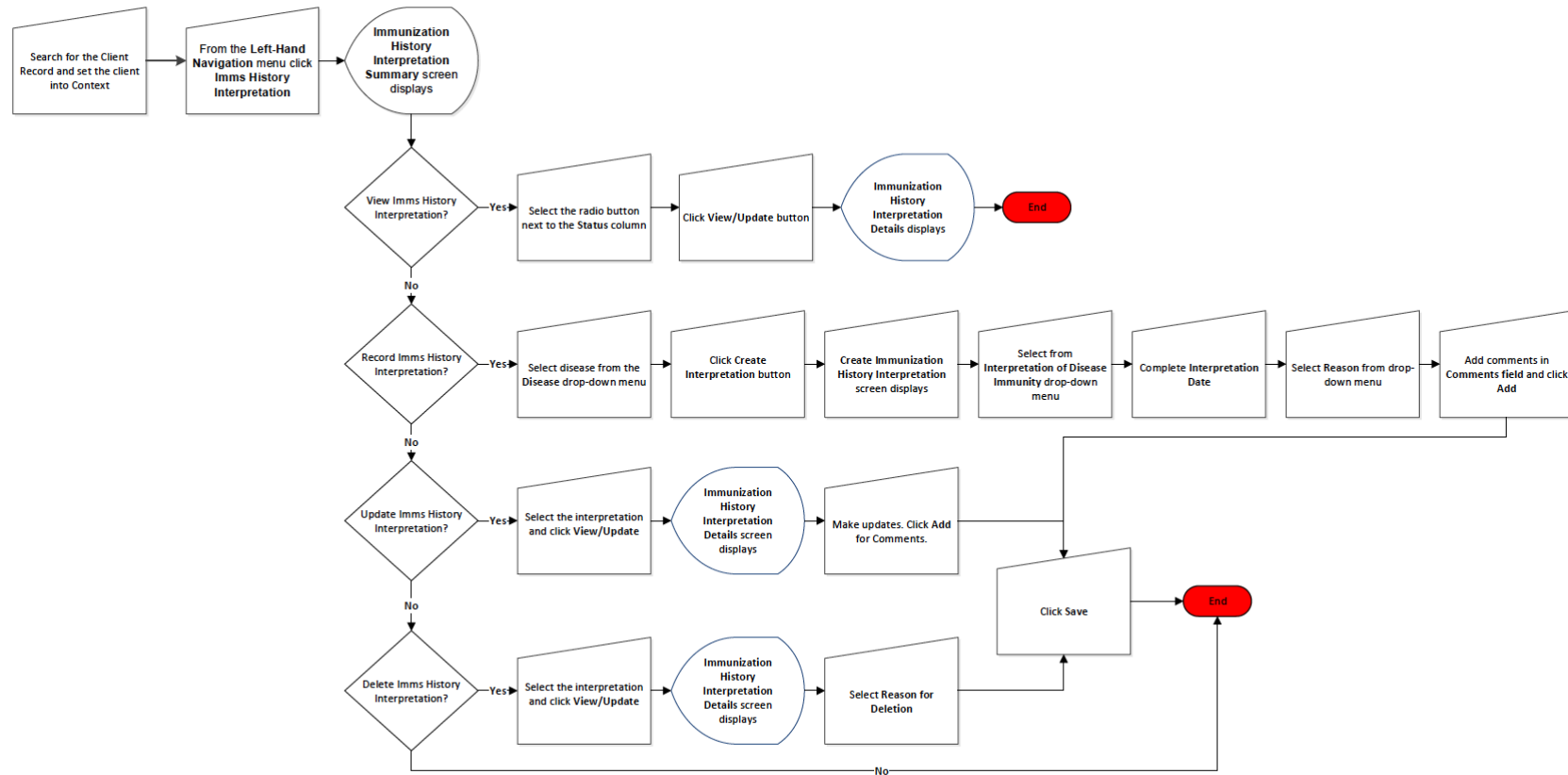


Imms History Interpretation – QRC 2.5





Panorama Quick Reference Cards



Points to Remember

- The **Immunization History Interpretation Summary** screen provides a summary view of available interpretation data regarding a client's susceptibility/immunity to a disease. Available information may be obtained directly from a client, laboratory records, or from a client's healthcare provider.
- The only updates that can be made are to change the status (Active or Inactive) or to add a comment in the **Comments** section.