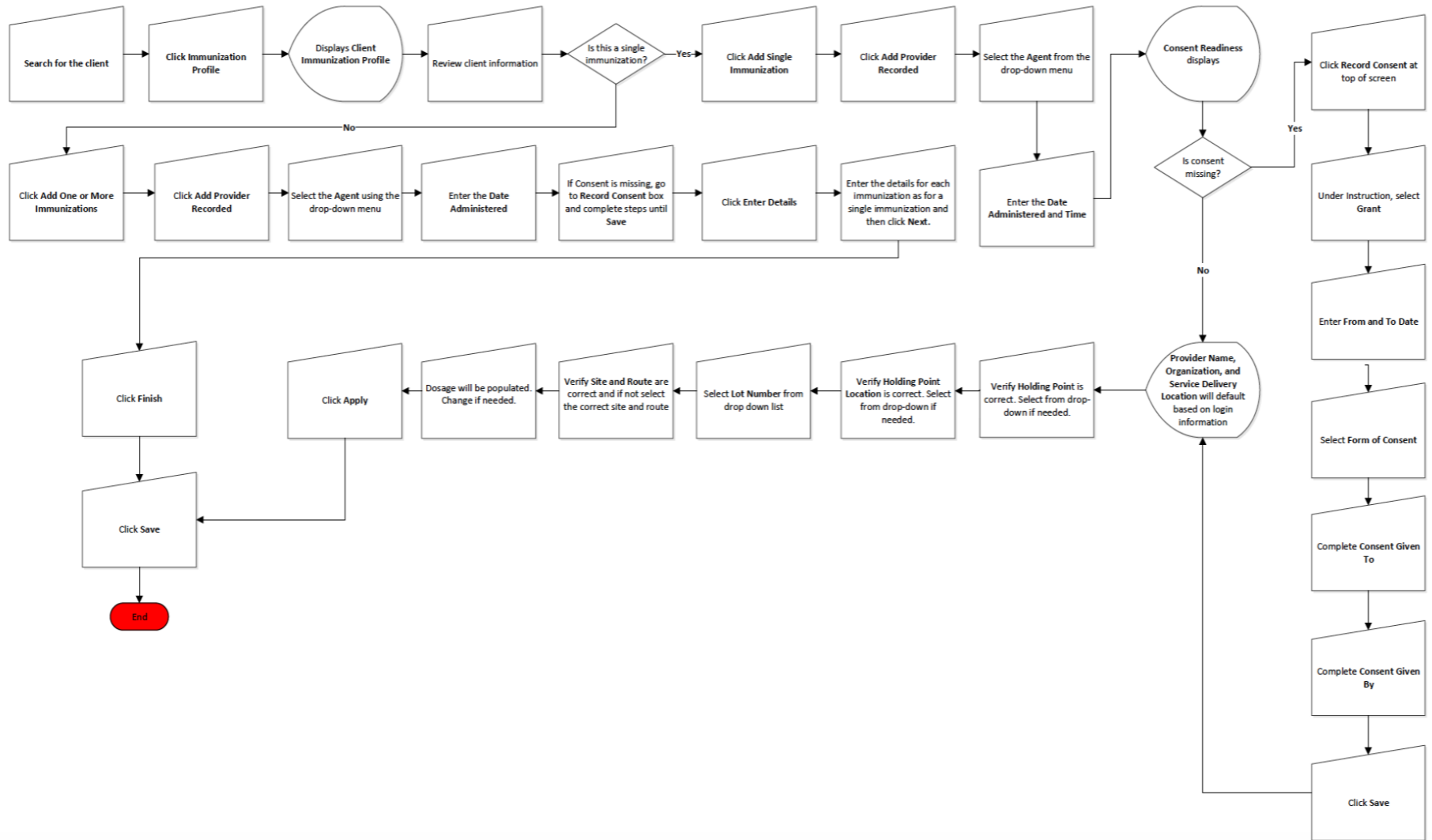


Provider Recorded Immunizations – QRC 2.2





Panorama Quick Reference Card



Points to Remember

- If a user has the Immunization Nurse (Imms Nurse) role, all immunizations recorded by the user will be automatically recorded as administered by the Provider associated with the user's account. If the Provider associated with your account is wrong, or there is no Provider, contact the service desk.
- A provider can record single or multiple immunizations in one session.
- Panorama makes information easy to access and review as clinicians conduct their client encounters and make clinical decisions.
- The Immunization Profile will be populated with historical information from ANS/ANDI as of January 2018.
- The Forecaster is a decision support tool that is intended to supplement a clinician's decision; it should never replace a clinician's judgement. If there is any doubt about the forecasted immunizations, follow your clinical judgement and discuss with your manager.