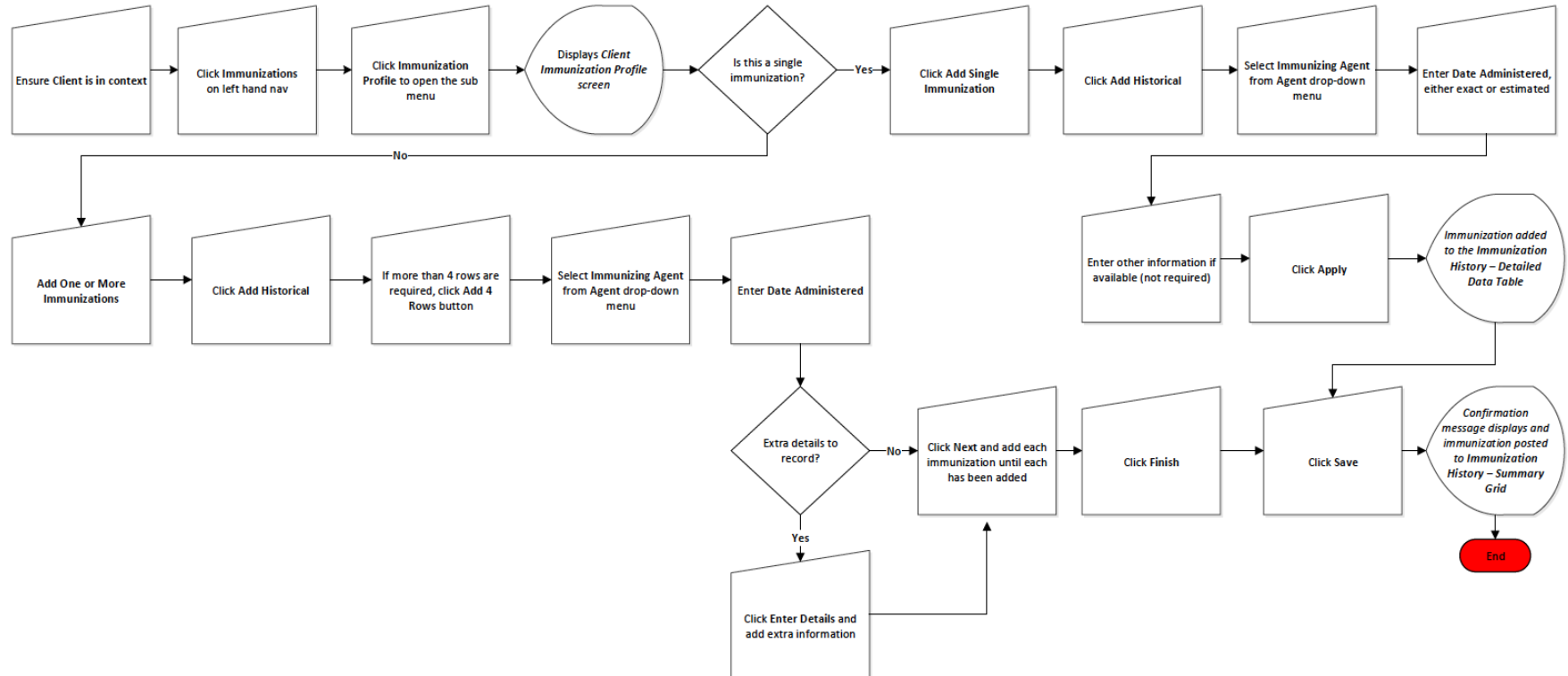


## Record Historical Immunizations – QRC 2.1



### Points to Remember

- The “Add Historical” function is used to record an immunization (or series of immunizations) that were administered historically, e.g., by a provider other than Public Health.
- Multiple historical immunizations can be added at once.



## Panorama Quick Reference Card



- The only mandatory fields for historical immunizations include Agent and Date Administered, however all available information should be recorded.
- Users must click the Save button before exiting the screen.
- For the multiple immunization option, there is no estimated checkbox. The date can be changed if more information is received.